

# HB

## HB HYDRAULIC BOOSTER

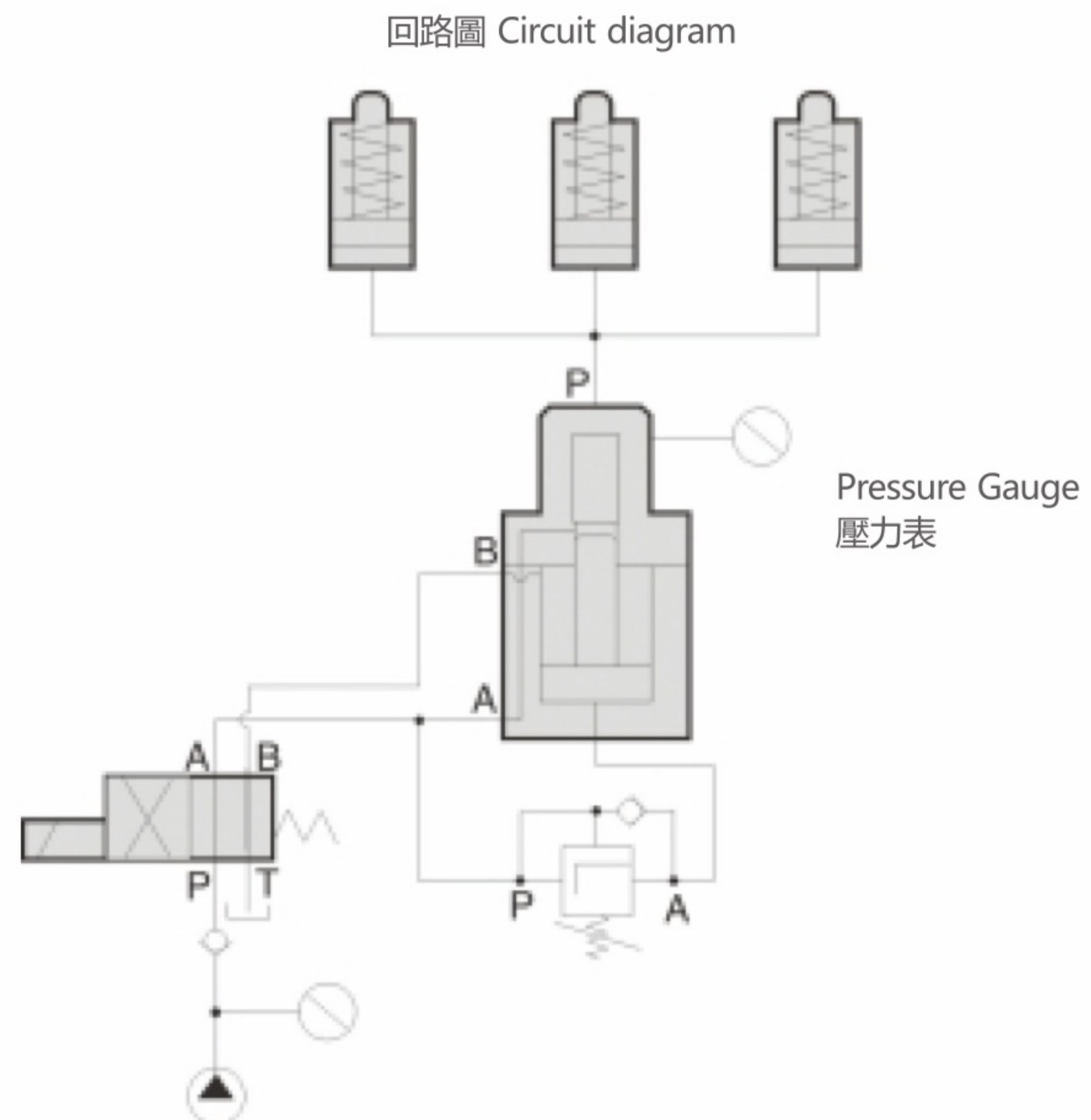
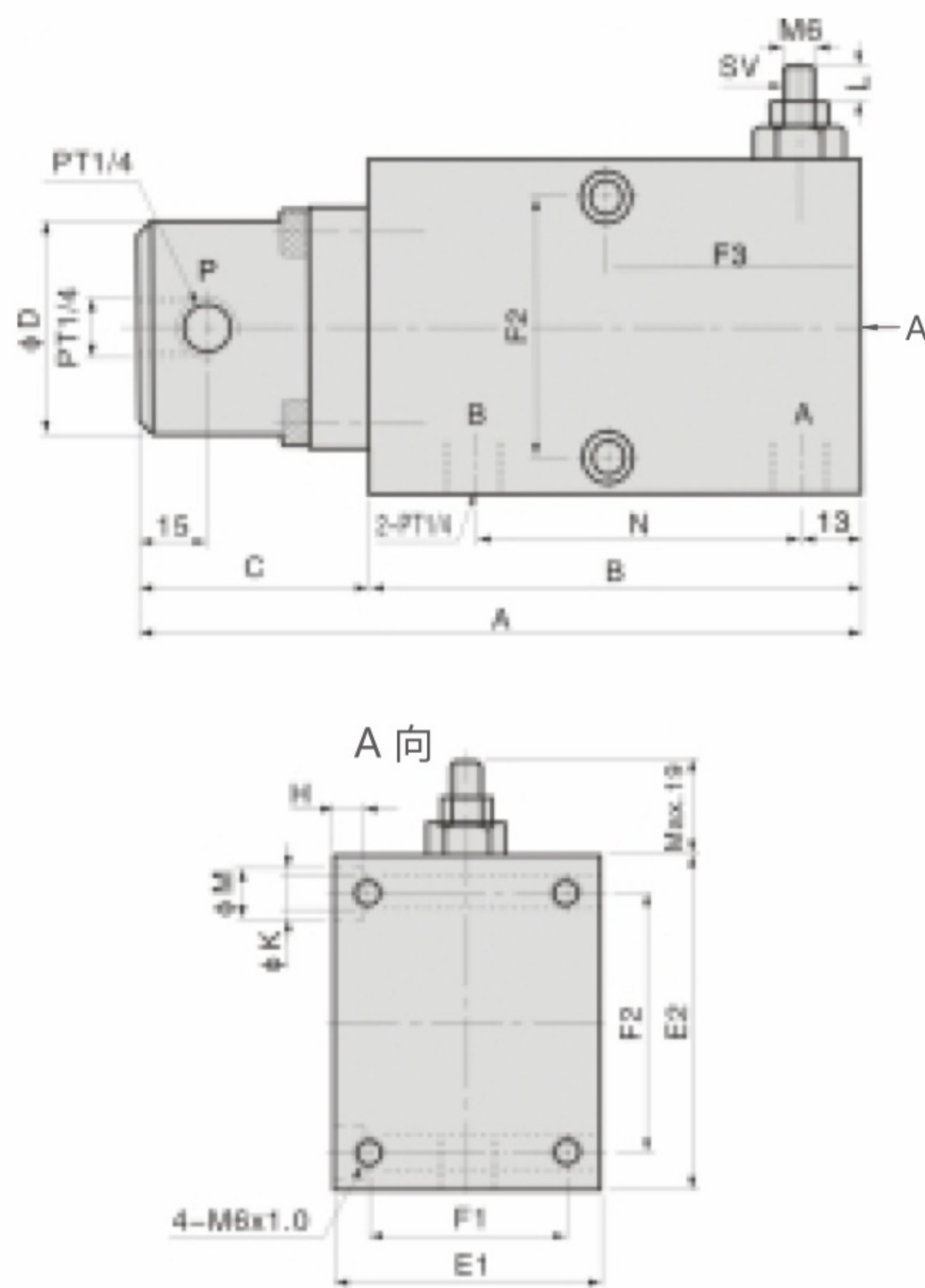


### FEATURES

A hydraulic sequential valve is attached to this booster. When operating, it oils cylinder and makes it be at the dual pressure and let the sequential valve act, and then it will have multiple boosting pressure. It's fit for hydraulic special purpose machine and MC clamp in low pressure circuit. It needs a solenoid valve installed in the circuit, and then it will be able to operate HB super-charger. The super-charger may be converted automatically low oil- pressure into high oil-pressure and obtain a high pressure clamping.

Max. operating pressure: 50 kgf/cm<sup>2</sup>

Min. operating pressure: 20 kgf/cm<sup>2</sup>



Unit:mm

Model	Verstärkungs- verhältnis Multiple boost	Ausgangsseite- Förderdruck (ccm) High pressure output	A	B	C	ΦD	E1	E2	F1	F2	F3	H	ΦK	ΦM	N
HB-9×6	9	6CC	157	107	50	Φ46	58	72	43	56	55	7	Φ7	Φ11	71
HB-8×22	8	22CC	210	139	71	Φ58	82	95	62	80	70	9	Φ9	Φ14	96
HB-5×35	5	35CC	210	139	71	Φ58	82	95	62	80	70	9	Φ9	Φ14	96
HB-3.8×45	3.8	45CC	210	139	71	Φ58	82	95	62	80	70	9	Φ9	Φ14	96

Recommended: ISO-VG-32 hydraulic oil equivalent to ISO viscosity grade